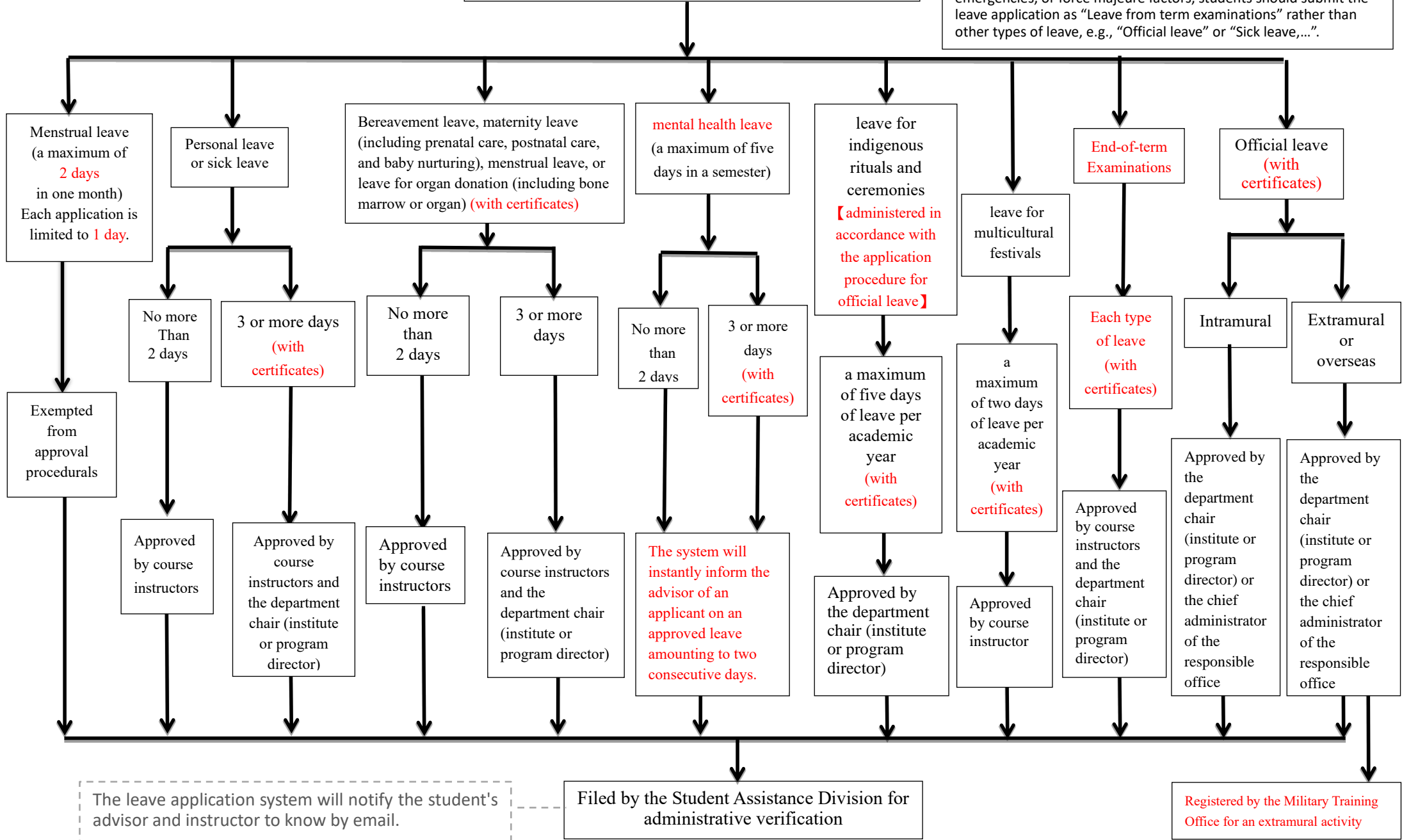




# NCKU Student Leave Application Flow Chart

**Regulations for Student Leave of Absence:**  
 Article 6. Leave-taking during semester examinations is prohibited.  
 Note: During end-of-term examinations, if there are major emergencies, or force majeure factors, students should submit the leave application as "Leave from term examinations" rather than other types of leave, e.g., "Official leave" or "Sick leave,....".



- ★ Applications should be submitted and processed online. Applicants who fail to apply online due to unforeseen contingencies are allowed to submit a written application for approval.
- ★ Please note: Applications will not be accepted starting from the 20<sup>th</sup> day (inclusive) following the day after the leave date.